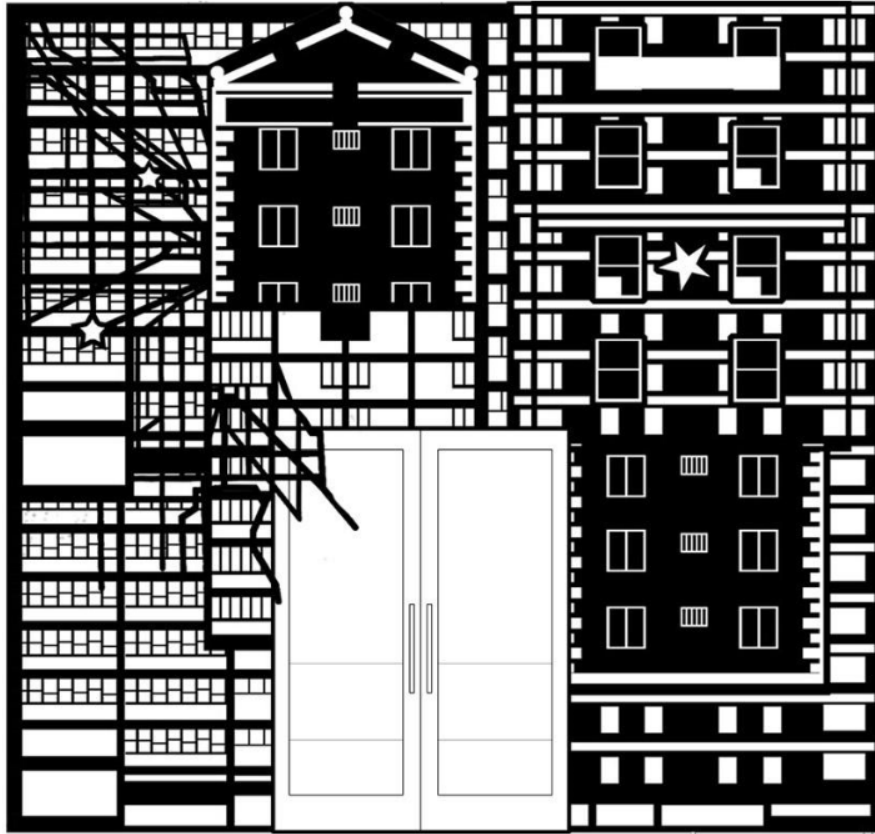


NPHM_threshold

OLALEKAN JEYIFOUS + AMANDA WILLIAMS

02.22.21

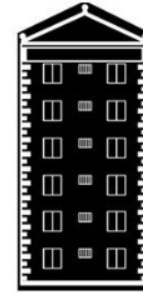
ORIGINAL CONCEPT



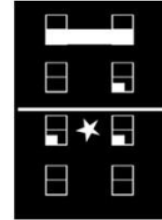
COMPOSITE PATTERN



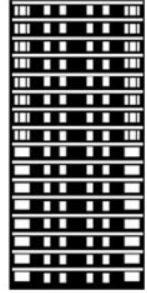
HAROLD ICKES



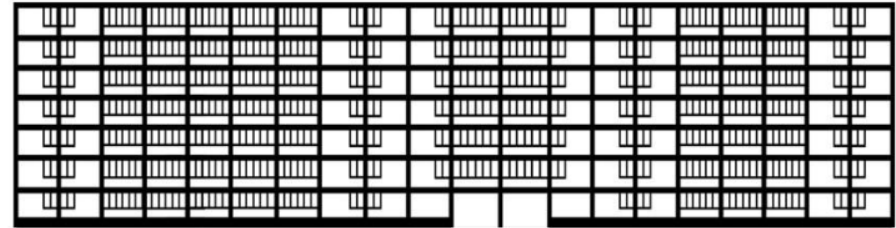
DEARBORN



IDA B. WELLS



STATEWAY



CABRINI GREEN



Evolved the idea of activating artifacts.
Focus on the painted color chips as a symbolic act of resistance.

Images that resonate





Strategy:

Use horizontal progression from Taylor St northward (along Ada St) to tell the story of resistance as joy through color and artifact.



NATIONAL PUBLIC HOUSING MUSEUM

Strategy:

Full panel color blocks that dematerialize
into confetti fragments of light and whimsy

Material considerations:

GLAZING--

Fritted glass

Laminated glass

Back-painted

(or similar effect appropriate for exterior condition)

Cast Glass? Glass-block?

SOURCE MATERIAL--

What quantity of paint chips remain?

(Could we sandwich actual artifacts into the installation?)



NATIONAL PUBLIC HOUSING MUSEUM

Strategy:

Stair tower full of human scale photographs that go from full density at ground and lighten as we ascend.
Photos monotonized to match color palette.



NATIONAL PUBLIC HOUSING MUSEUM



STUDIES



STUDIES



TRANSLATION
OF THE
PHOTOGRAPH



STUDIES



TRANSLATION
OF THE
PHOTOGRAPH



STUDIES

Study showing interior view looking upward and also out toward upper frieze of Ada St.



STUDIES

Studies of source images
and combining varying
scales:

Canopy? Underside of
stair? Full interiority?

ONGOING CONSIDERATIONS:

Actual rhythm and treatment of the frame system . (*Feels cage like*)

Cohesion or separation of the stair tower from the entry ribbon

Stronger contrast of interior reading of the threshold and exterior

Turquoise fin wall near Taylor St. as “found wall” element (*extracted from inside building*)



thank you